



Huawei Launches the Next-Generation CloudCampus Solution for Constructing Digital Campuses



华为全联接大会

Grow with the Cloud

云领未来



Kevin Hu

President of Huawei Switch & Enterprise Gateway Product Line

Mr. Kevin Hu is now the President of the Switch & Enterprise Gateway Product Line, where he plays a strategic leadership role, and is responsible for the overall management of the business unit.

[Goods] Apple

Price: \$0.99/KG

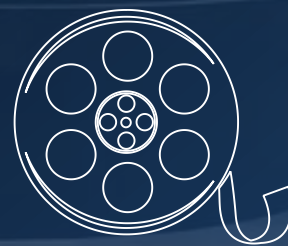
Inventory: 500 KG

Shipment: 200 KG

Supplier: 5HRN0006

Arrival date: 2018/08/28

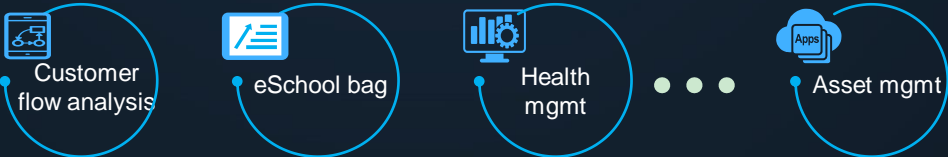
L1	Apple Box 500 Stock 200	Apple Box 500 Stock 200	Apple Box 500 Stock 200	Apple Box 500 Stock 200
L2	Mango Box 500 Stock 200	Mango Box 500 Stock 200	Mango Box 500 Stock 200	Mango Box 500 Stock 200
L3	Pear Box 500 Stock 200	Pear Box 500 Stock 200	Pear Box 500 Stock 200	Pear Box 500 Stock 200
L4	Peach Box 500 Stock 200	Peach Box 500 Stock 200	Peach Box 500 Stock 200	Peach Box 500 Stock 200
L5	Orange Box 500 Stock 200	Orange Box 500 Stock 200	Orange Box 500 Stock 200	Orange Box 500 Stock 200
L6	Banana Box 500 Stock 200	Banana Box 500 Stock 200	Banana Box 500 Stock 200	Banana Box 500 Stock 200



CloudCampus

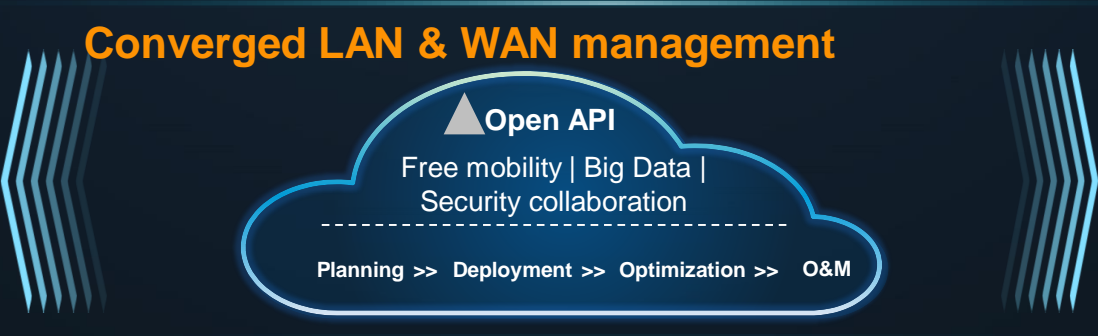
CloudCampus: Hybrid Wireless Access, Multi-Tenant Fabric, Full lifecycle Cloud Management

Value-added SaaS platform



Benefits for Enterprise

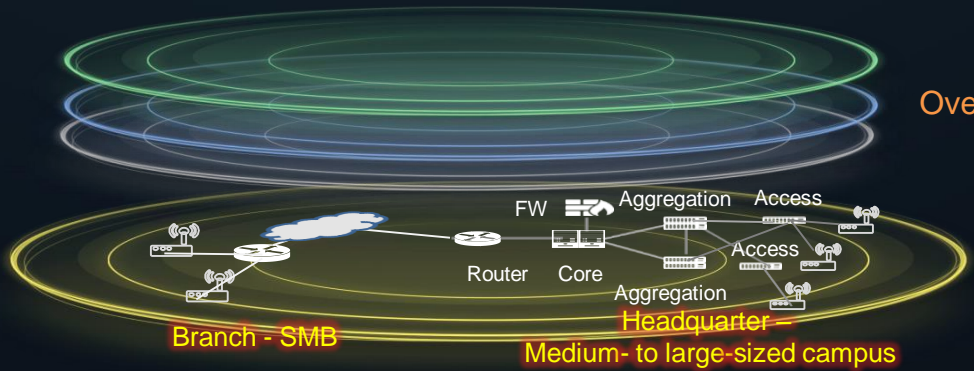
- Converged LAN & WAN management**
Months to days, reducing OPEX by 80%+
- Multi-Tenant Fabric, one network for multiple purposes**
Multi-tenant network services, minute-level service provisioning
- Open cloud platform, rich applications**
20+ industry applications, 30+ partners



Benefits for MSPs

- Self-operable**
1st leasable or sellable cloud management platform
- Management scale-out**
20,000 to 1,000,000+ devices
- Dual-mode management, smooth evolution**
Local management to cloud management

Multi-Tenant Fabric



Virtual monitoring network
Virtual IoT ...
Virtual office network

Underlay physical network

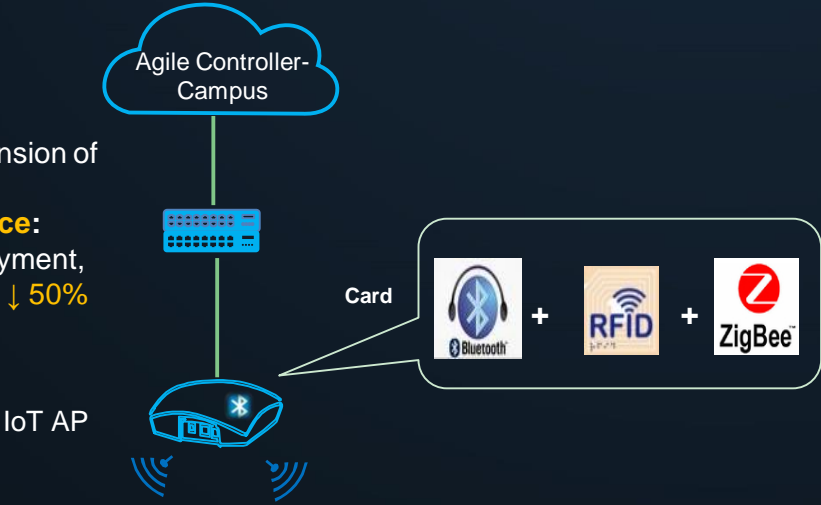
X-Gen Wi-Fi Solution
3x rate, 4x users, and large numbers of IoT terminals

Converged Wi-Fi and IoT
Flexible expansion of RFID, Bluetooth, and ZigBee

Hybrid Wireless Access and Open Ecosystem to Support Digital Transformation of Various Industries

Huawei Solution

- **Flexible expansion:** expansion of IoT applications
- **Multi-network convergence:** converged IoT/Wi-Fi deployment, one backhaul/co-site, **TCO ↓ 50%**



ESL
ESL

Asset label
Asset management

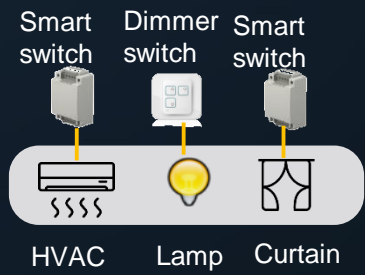
Energy efficiency sensor
Energy efficiency management

Infant label
Infant prevention

Fluid level label
Infusion management

Smart wristband
Student health management

Energy efficiency management,
energy consumption ↓ **30%**



Automatic price update,
manpower ↓ **90%**



Infusion monitoring, customer
complaint rate ↓ **30%**



Student health management

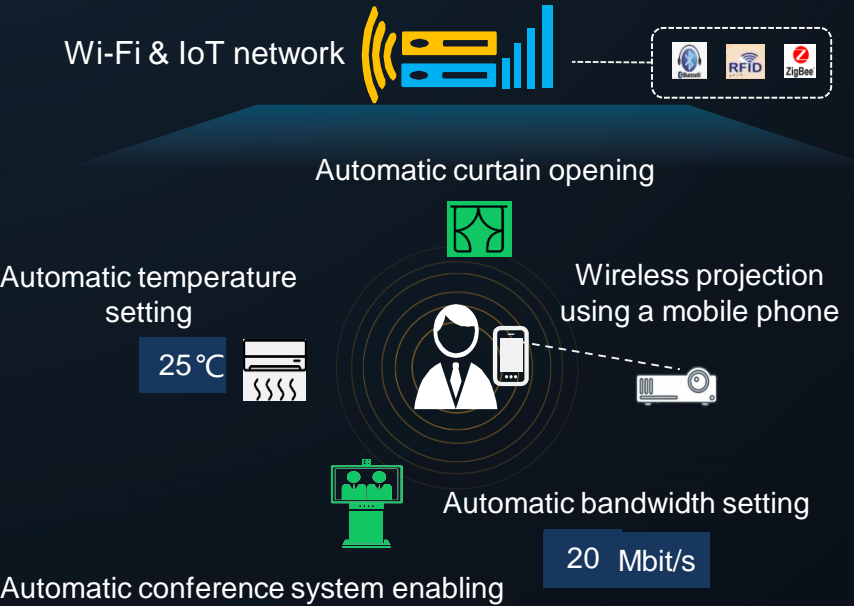
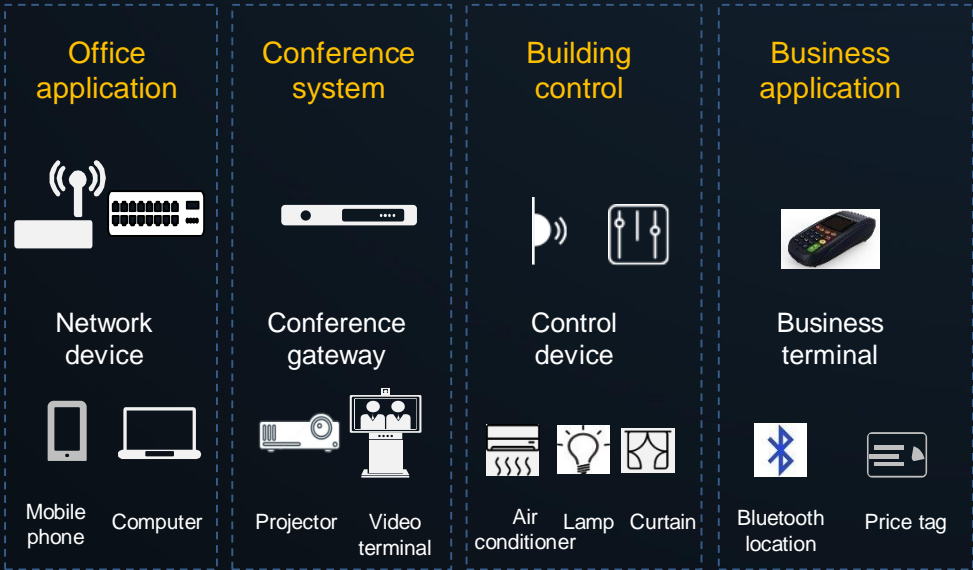


Office : Hybrid Wireless Access and Multi-Network Convergence Achieve All Wireless Connections

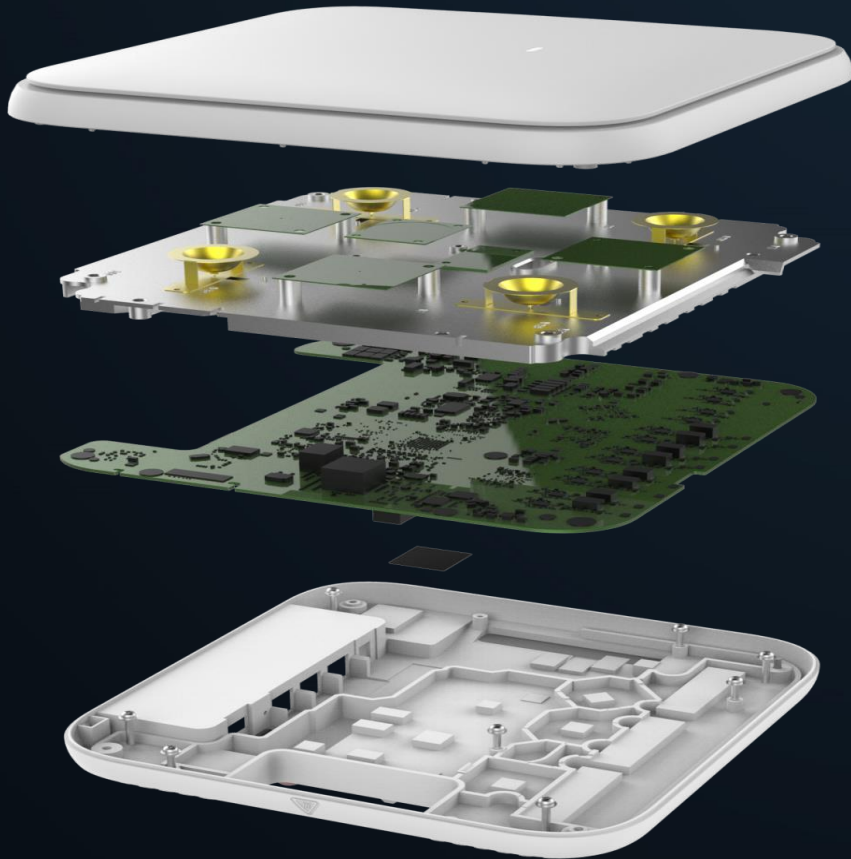
Multiple wired and wireless connections
Multiple isolated, concurrent systems

VS

Converged Wi-Fi and IoT network, all-wireless connections
User-centric consistent experience



X-Gen Wi-Fi AP7060DN



3x Bandwidth

802.11ax radio interface,
1024 QAM, and 8x8 MU-MIMO,
achieving the 3-fold peak bandwidth
increase



4x Concurrent Access Capacity

OFDMA MU-MIMO technology,
making Wi-Fi orderly



Connectivity of Everything

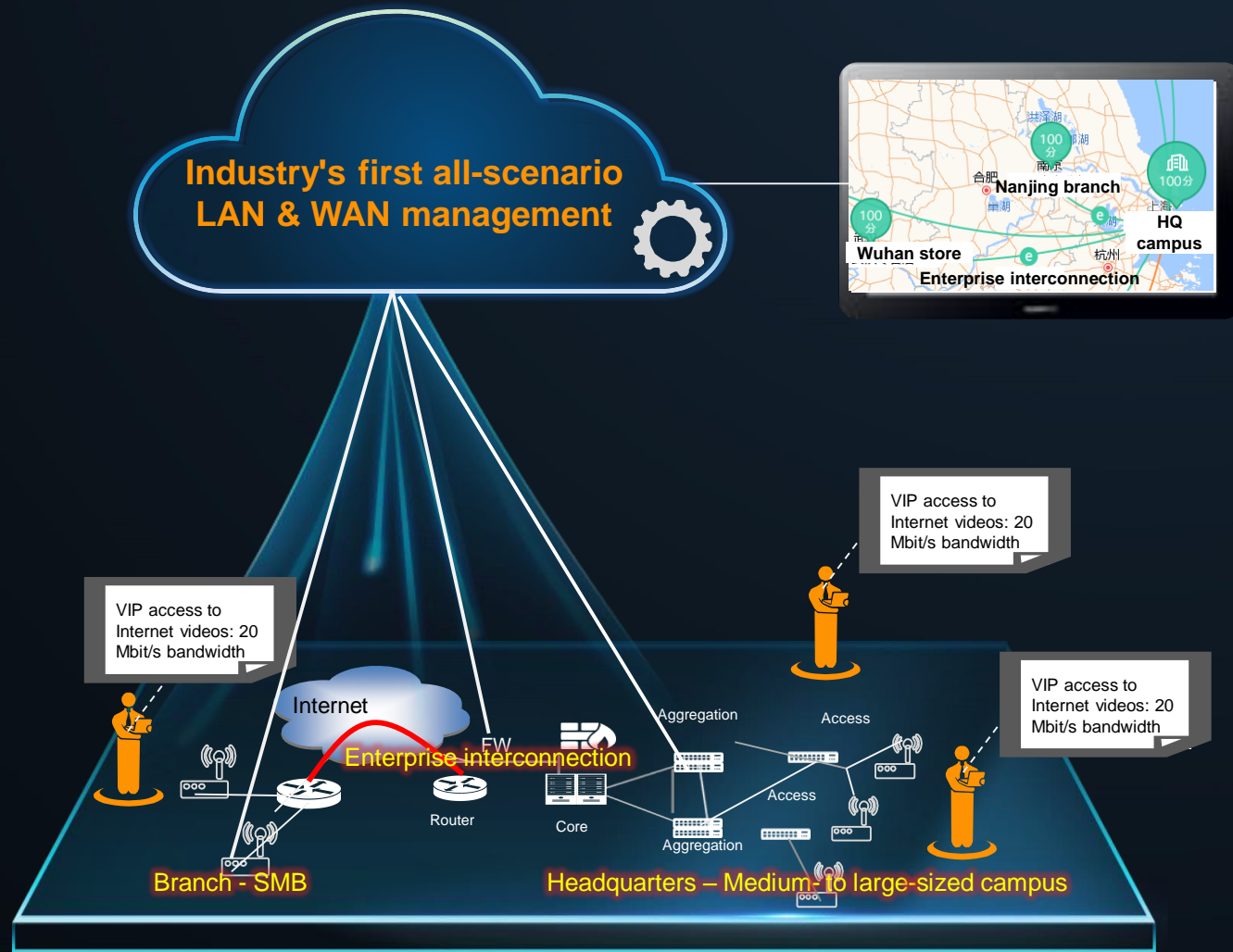
Wi-Fi/IoT convergence, enabling automatic
asset inventory, energy efficiency
management, and self-management of
conference rooms



Bluetooth Serial Port

Easy maintenance

Converged LAN & WAN Management Simplifies Management of All Service Paths



Consistent LAN & WAN O&M:

unified O&M for the headquarters, branch, and enterprise interconnection networks, reducing O&M personnel by 50%



Consistent LAN & WAN policy control:

based on user and application identity, cloud-based bandwidth and QoS control, and consistent network-wide service experience



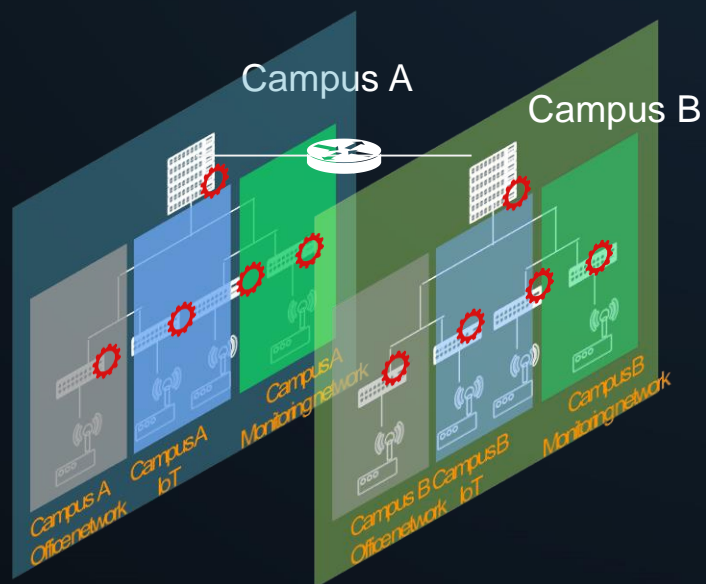
Unified LAN & WAN deployment:

implement plug and play of headquarters, branch, and enterprise interconnection networks on the cloud, improving efficiency by 80%

Multi-Tenant Fabric, Automatic Network Services

AS-IS

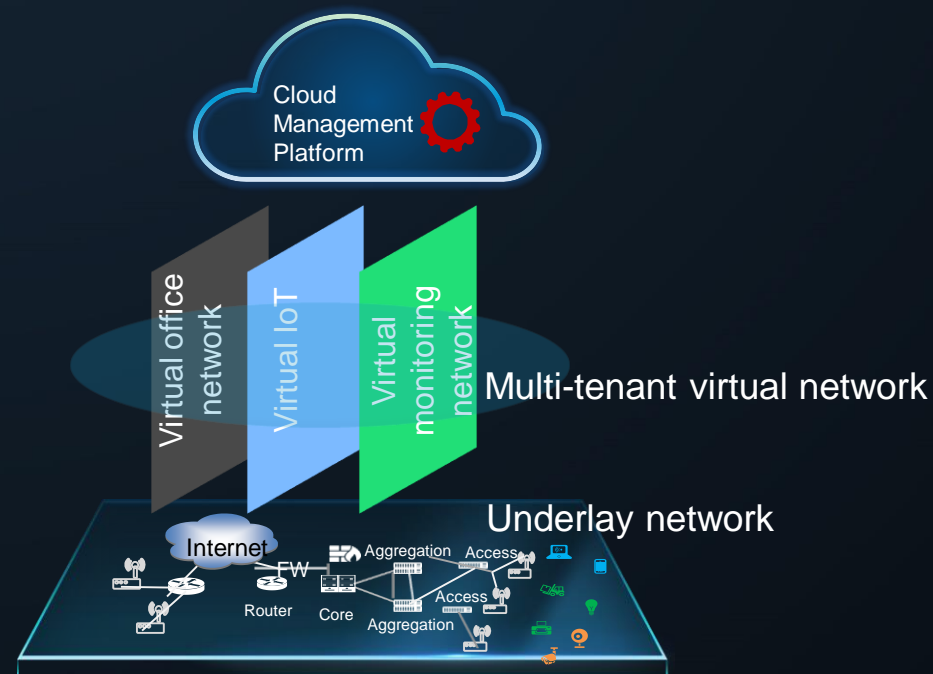
Static preset network



- Limited by solidified network topologies and physical locations, **utilization of network resources is low**.
- Using **static deployment** based on VLANs, IP addresses, ACLs, and VPNs, new services are deployed in days.

TO-BE

Multi-Tenant Fabric



- One physical network virtualized into multiple networks to implement **multi-tenant** network applications and **share network resources**
- **Automatic deployment**: virtual network deployment based on the cloud-based natural language, enabling **minute-level new service provisioning**.

Open Cloud Platform: 30+ Partners, 20+ Industry Applications

Digital Education



eSchoolbag

Digital Business



ESL

Digital Enterprise



Smart warehousing



Health management



Smart guided selling



Asset management

Open API
150+



Network O&M API



Authentication and accounting API



Automation API

...



Value-added data API

Thank You.

Copyright©2017 Huawei Technologies Co., Ltd. All Rights Reserved.

The information in this document may contain predictive statements including, without limitation, statements regarding the future financial and operating results, future product portfolio, new technology, etc. There are a number of factors that could cause actual results and developments to differ materially from those expressed or implied in the predictive statements. Therefore, such information is provided for reference purpose only and constitutes neither an offer nor an acceptance. Huawei may change the information at any time without notice.